

Exhaust Technical Specification

TEKA

THE ENDURANCE KARTING ASSOCIATION

Manufacturer	TEKA
Model	Power Pipe
Engine	Briggs & Stratton Animal

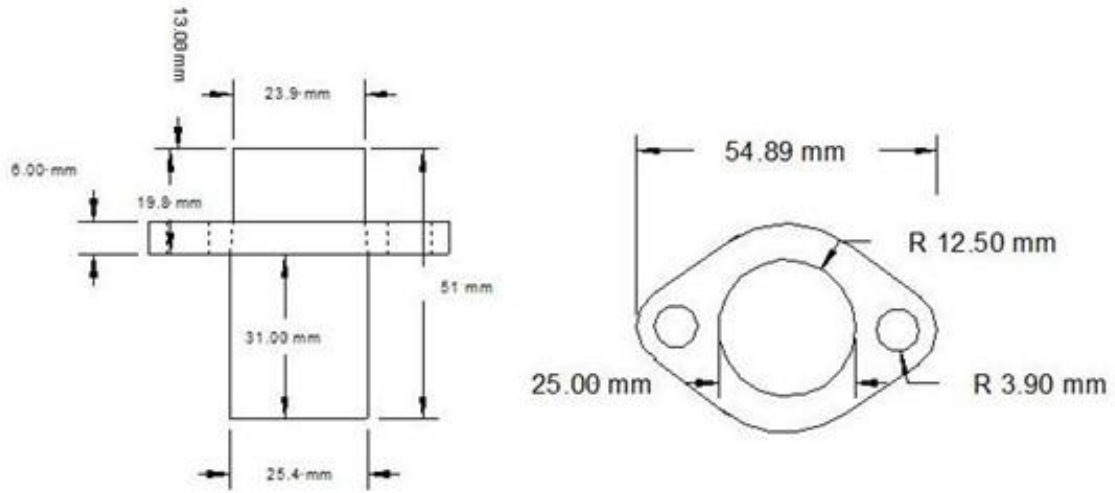
This specification reproduces description, illustrations and dimensions of the product. All products must be manufactured to these specifications and within these dimensions.

This specification represents the only eligible exhaust system for use in TEKA with the Briggs & Stratton Animal engine.

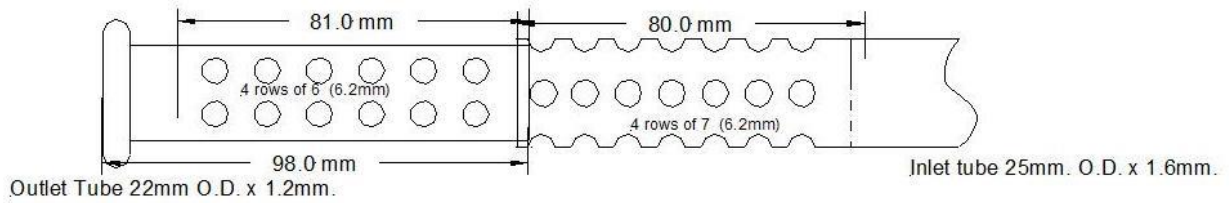
This specification is the property of TEKA and cannot be reproduced by another manufacturer.

Technical Information		
Description	Dimension/Form	Part
Minimum thickness	0.9mm	Body
Maximum thickness	1.1mm	Body
Material	Cold rolled sheet	Body
Length	150mm	Body
Outside diameter	77.4mm	Body
Other Details		
"TEKA" stamped on the muffler body		

Technical Drawings

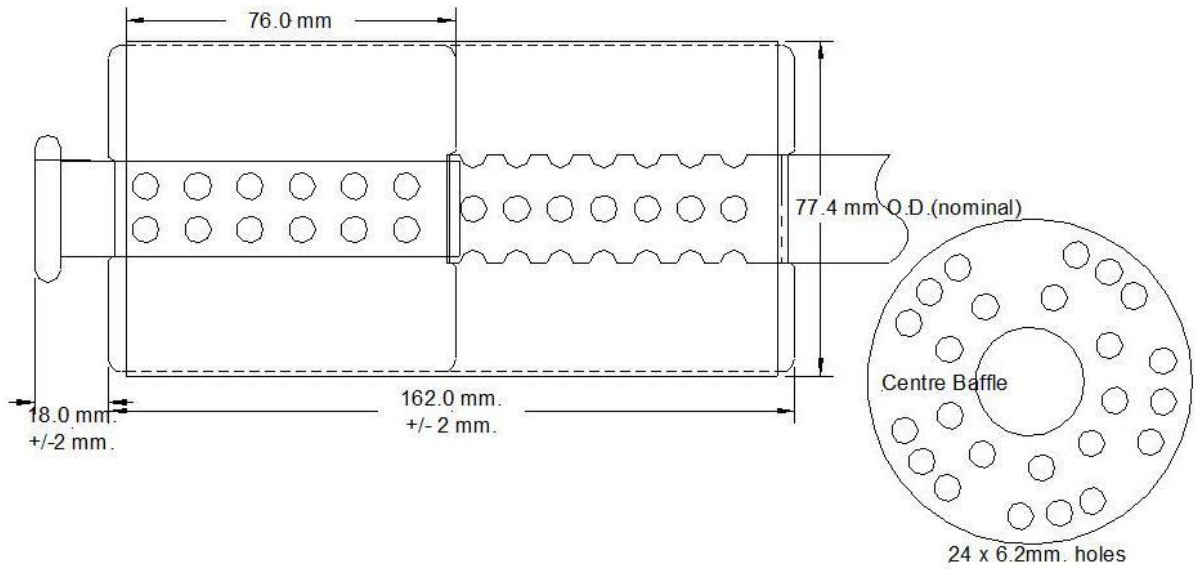


Header Stub Nominal Dimensions



Outlet Tube 22mm O.D. x 1.2mm.

Inlet tube 25mm. O.D. x 1.6mm.



18.0 mm.
+/- 2 mm.

162.0 mm.
+/- 2 mm.

77.4 mm O.D. (nominal)

Centre Baffle

24 x 6.2mm. holes

Photos







